

IR5500/OPIR-5 Quick Start Guide

Standard Range Units

Rev F

The purpose of this Quick Start Guide is to help customers perform the minimum procedures for having a working open path gas detector. It is not a substitute for the operating manual.

WARNING: If you do not roughly align the source and receiver before power up, you may have faults that you will need to reset before adjusting alignment

Tools:

- 2.5 mm hex allen wrench
- Magnet

Start at Source:

- Apply power to the source (if not already powered)
- Align source to receiver using housing sites and adjusting the four hex screws
- Tighten all hex screws while keeping alignment in tact
- Measure and record the distance (i.e. path length) between the source and receiver in meters

End at Receiver:

- Align receiver to source using housing sites and adjusting the four hex screws
- Tighten screws lightly so that movement is minimized (the final alignment will be done with power applied to the unit)

Apply Power to Receiver

Display will show the following

r F

(r= revision, F= version)

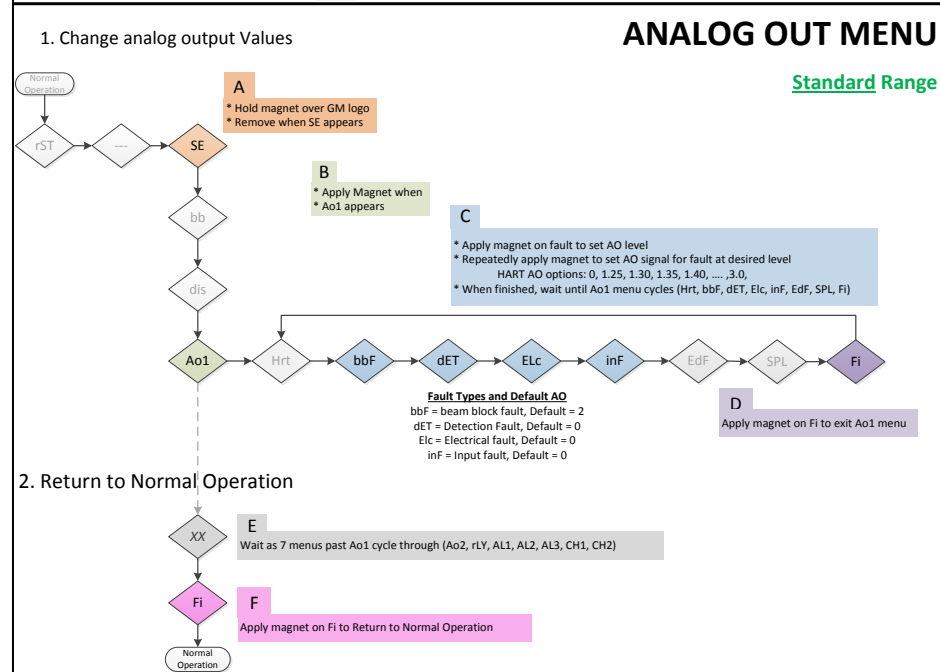
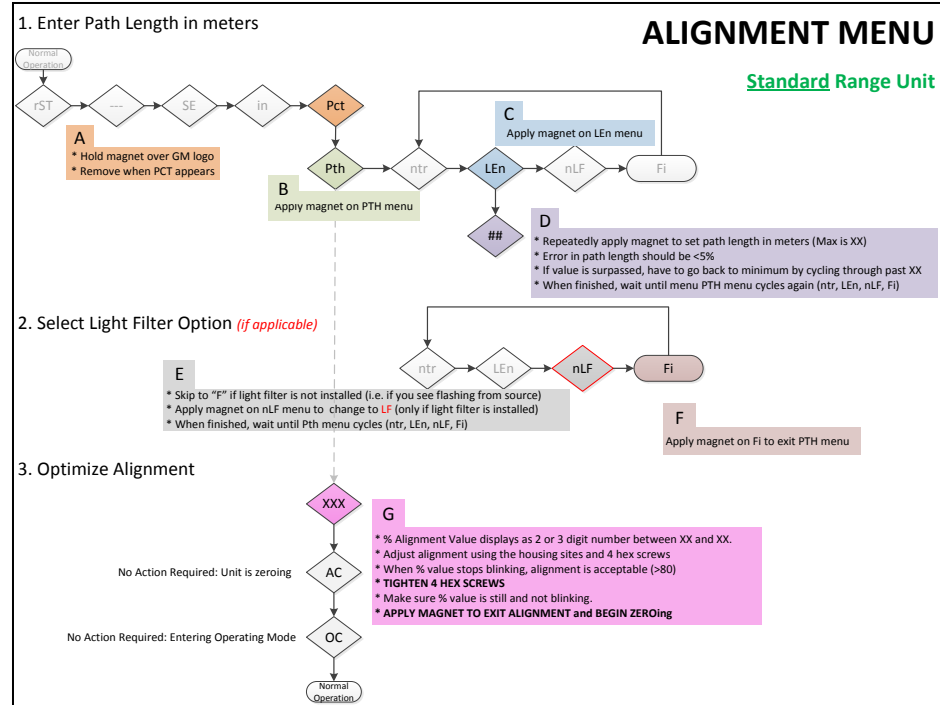
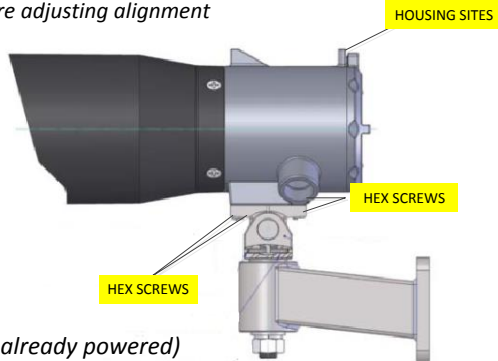
SU

(shows steady for several minutes, SE=set up)

0

(normal operation, 0 if no combustible gas present)

Now follow the Alignment Menu and Analog Out instructions



IR5500/OPIR-5 Quick Start Guide

Short Range Units

Rev F

The purpose of this Quick Start Guide is to help customers perform the minimum procedures for having a working open path gas detector. It is not a substitute for the operating manual.

WARNING: If you do not roughly align the source and receiver before power up, you may have faults that you will need to reset before adjusting alignment

Tools:

- 2.5 mm hex allen wrench
- Magnet

Start at Source:




- Apply power to the source (if not already powered)
- Align source to receiver using housing sites and adjusting the four hex screws
- Tighten all hex screws while keeping alignment in tact
- Measure and record the distance (i.e. path length) between the source and receiver in meters

End at Receiver:

- Align receiver to source using housing sites and adjusting the four hex screws
- Tighten screws lightly so that movement is minimized (the final alignment will be done with power applied to the unit)

Apply Power to Receiver

Display will show the following

-  (r= revision, F= version)
-  (shows steady for several minutes, SE=set up)
-  (normal operation, 0 if no combustible gas present)

Now follow the Alignment Menu and Analog Out instructions

